

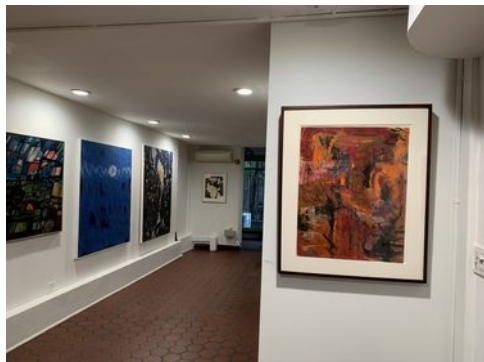
# Jon Schueler

(1916-1992)



**NEWS**  
*November 2019*

Jon Schueler at Giverny,  
France, 1972

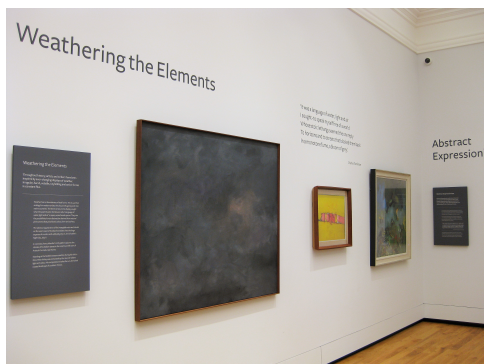


The exhibition *CA → NY: Post-War-Migration of Abstract Expressionists* at the [Anita Shapolsky Gallery](#), 152 E. 65<sup>th</sup> Street, New York has been extended until January 3, 2020. Ernest Briggs, Lawrence Calcagno, Herman Cherry, John Hultberg, Richards Ruben, and [Jon Schueler](#). Catalogue \$16. The Jon Schueler in the foreground is one of the paintings already purchased.

*Abstract, IV*, 1949  
23¾ x 18 ¾ in, oil on paper (o/p 49-4)

The recent Phillip A. Bruno gift of 74 works to the [Hunterian Art Gallery](#), University of Glasgow, Scotland, included a very distinctive little Schueler painting.

*Weathering, I*, 1989  
10 x 12in, oil on canvas (o/c 1596)



[Aberdeen Art Gallery](#) in Scotland has re-opened, with enthusiastic reviews, after a 4 year renovation. Its Schueler painting (near left) is displayed well in the Weathering the Elements section along with paintings by Peter Kinley and Henry Inlander.

*Night Sky, July II*, 1971  
50 x 60in (o/c 148)

Paintings by Jon Schueler will be part of the Waterhouse & Dodd, NY display at Art Miami from December 5-8<sup>th</sup>, 2019

*Burnt Umber*, 1956  
30 x 36 in, oil on canvas (o/c 56-27)



The 1<sup>st</sup> showing of the touring exhibition *Lost Man Blues: Jon Schueler—Art and War*, curated by Marissa Roth, is at The Museum, Turtle Bay Exploration Park, Redding CA from January 31 through April 26, 2020. Magda Salvesen gives a talk on Schueler on March 14, 2020.

*Wing Shadow Over Grey Sky*  
1982, 72 x 65 in, oil on canvas (o/c 1248)